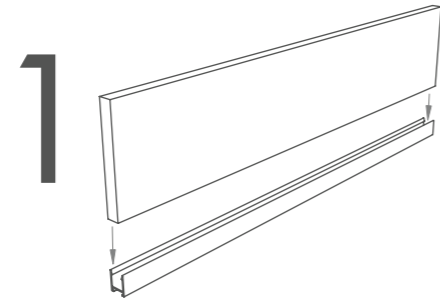
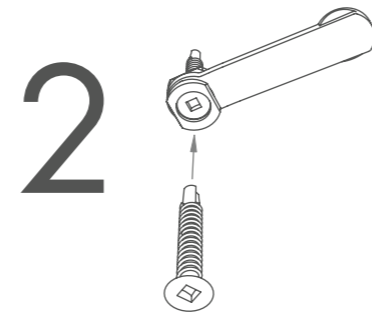


Before work commences, please ensure you take the time to plan out your Quietspace Frontier Install, plan out your fixing points (1200mm centres) and the spacings of the Frontier Connector clips before fixing the Frontier Connector clips to the ceiling or ceiling channel.

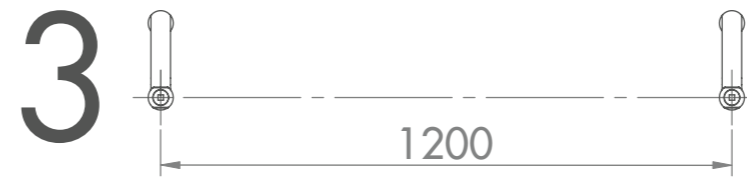
DIRECT FIX METHOD



1 Press fin into Frontier Channel, using a rubber-faced hammer to ensure a snug fit.



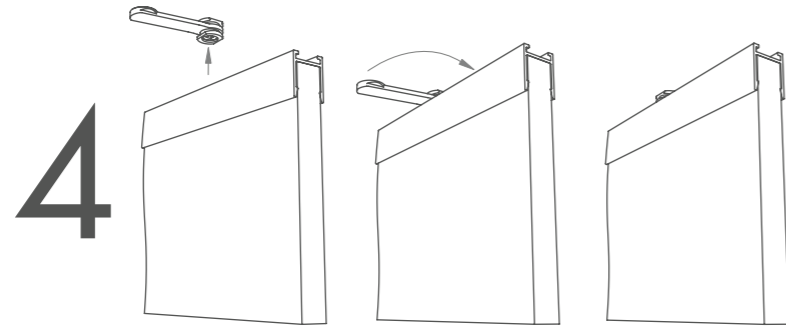
2 Push screw into Frontier Connector. Screw head diameter of 8mm required.



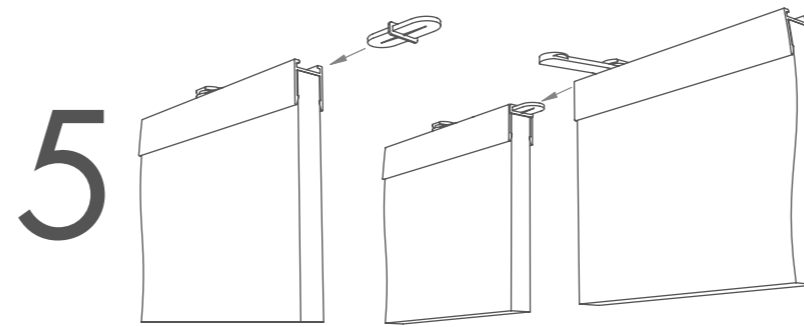
3 While holding the screw by the Frontier Connector, screw into appropriate substrate at 1200mm centres, until connector is firm but turns freely on the screw.

Quietspace[®]
FRONTIER[™]

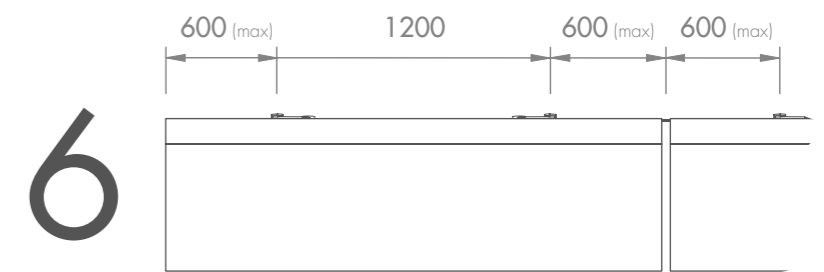
Pat. Pending NZ 727634 | AU 2016273959 | UK 1621613.7



4 With Frontier Connector perpendicular to the Channel, snap Channel onto Connector. Once the position is confirmed, rotate Connector 90 degrees to lock.

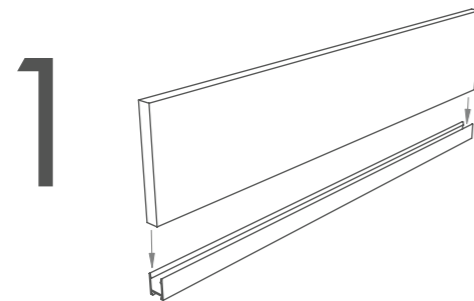


5 If two fins join, insert a Frontier Joiner into the first (locked) Channel. With the attaching fin's Connectors snapped but unlocked, slide the Channel onto the Joiner before locking Connectors.

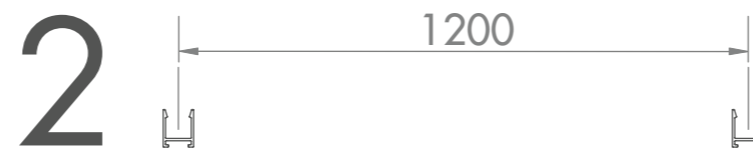


6 Final position of Frontier Connectors should be no more than 600mm from edge of fins.

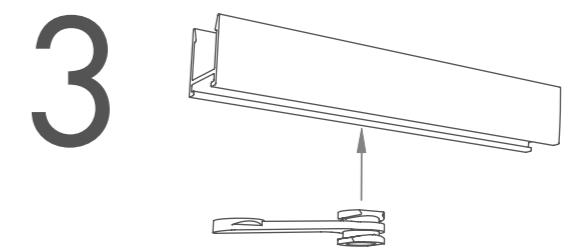
MOUNTED ONTO CHANNEL



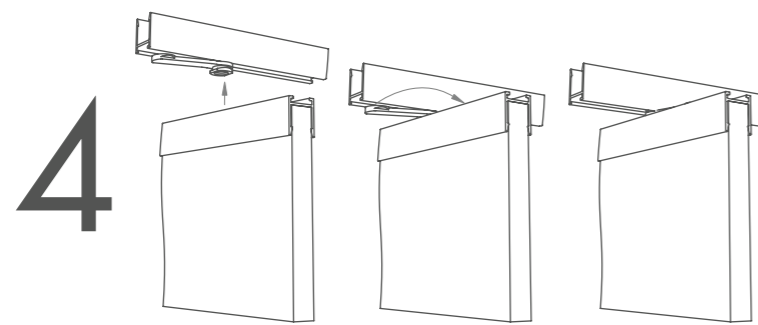
1 Press fin into Frontier Channel, using a rubber-faced hammer to ensure a snug fit.



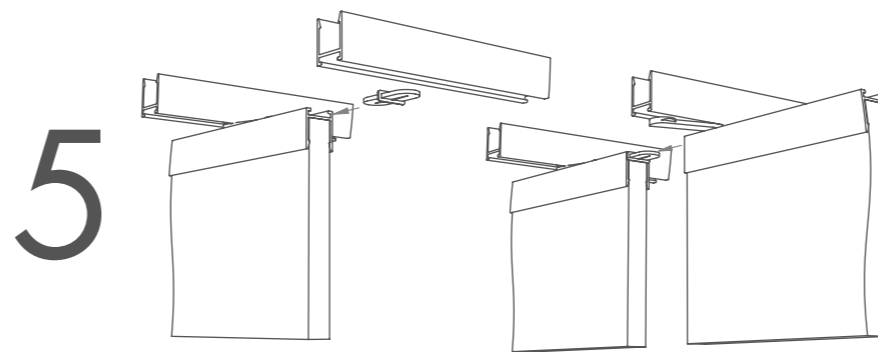
2 Position the support rails at 1200mm spacings using appropriate hardware.



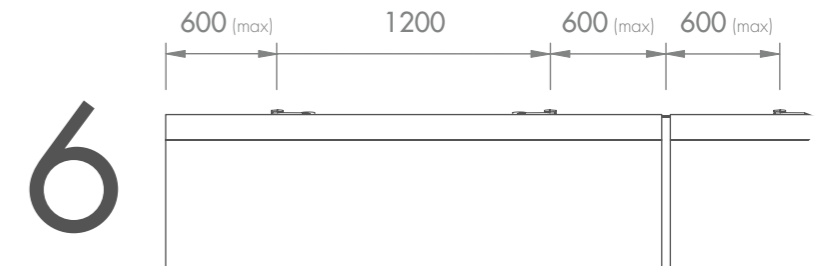
3 With Connector co-linear with support rail, snap Connector into extrusion in approximate position.



4 With Frontier Connector perpendicular to the Channel, snap Channel onto Connector. Once position is confirmed, rotate Connector 90 degrees to lock.



5 If two fins join, insert a Frontier Joiner into the first (locked) Channel. With the attaching fin's Connectors snapped but unlocked, slide the Channel onto the Joiner before locking Connectors.



6 Final position of Frontier Connectors should be no more than 600mm from edge of fins.